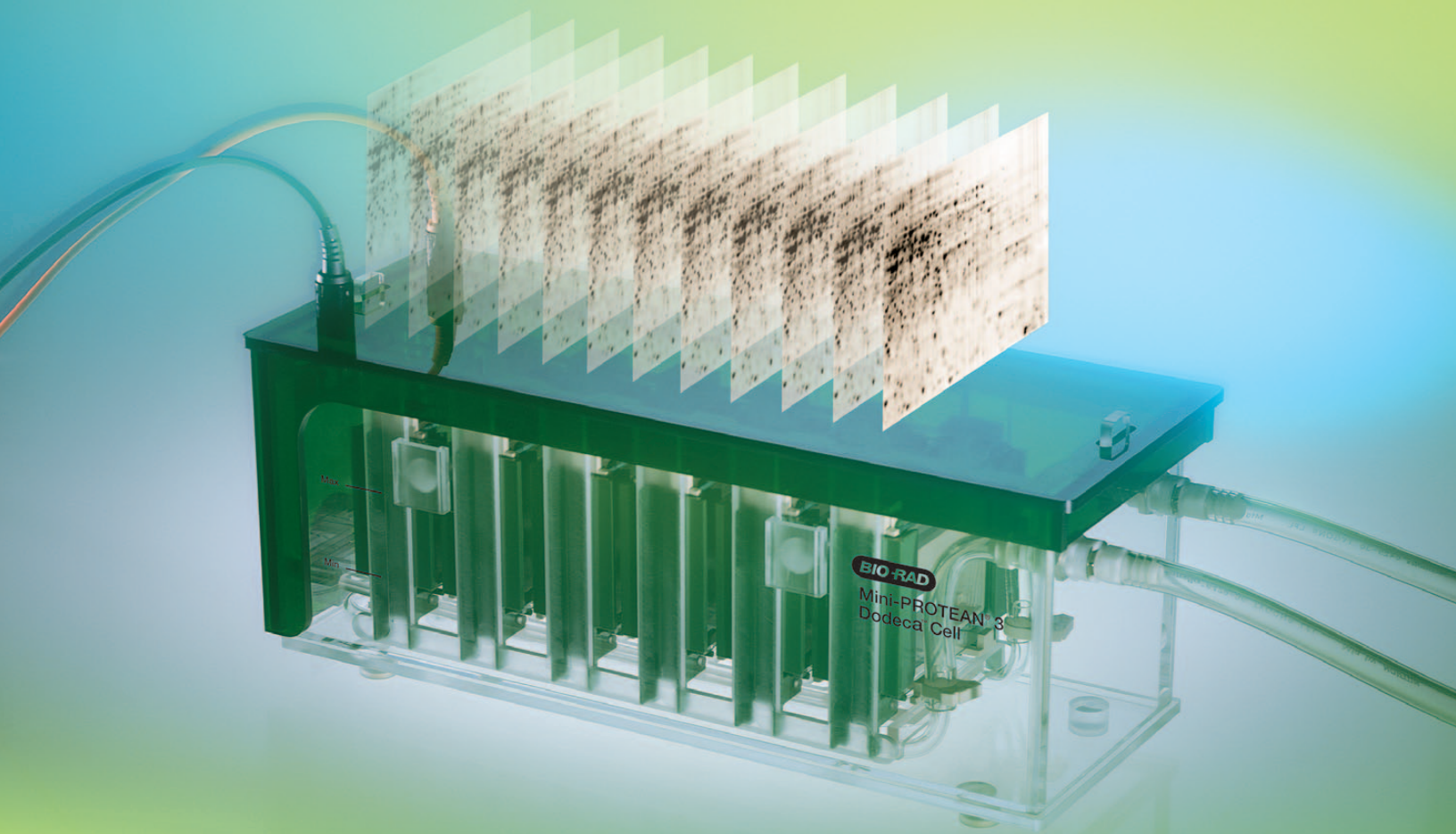


12  
times the data of  
a single mini gel



The Mini-PROTEAN<sup>®</sup> 3 **Dodeca**<sup>™</sup> Cell,  
for High Throughput and Resolution  
with the Speed and Ease of Mini Gels.

**BIO-RAD**

# 12 times the data in just 35 minutes

## The Mini-PROTEAN 3 **Dodeca Cell**

There's strength in numbers. For high-throughput mini gel electrophoresis analysis, 12 is the number we're thinking of. Run up to a dozen gels at a time, with cooling capabilities for high-resolution results. The Dodeca cell is easy to assemble, and can run hand-cast or precast gels. In less time, you can achieve consistent, clear results — 12 of them.

### **Reproducibility and Throughput**

Run up to 12 mini gels under identical conditions in just 35 min. You can hand cast gels 12 at a time, eliminating variables and improving reproducibility.

### **Versatility**

The Dodeca cell runs Ready Gel® precast gels, or you can hand cast your own with the Mini-PROTEAN 3 multi-casting chamber and Model 485 gradient former.

### **High Resolution**

A built-in cooling coil and room for a stir bar facilitate uniform buffer tank temperature and give you the highest resolution results possible. The cooling coil is easily attached to an external refrigerated circulator with a simple one-step connection.

### **Easy Assembly and Cleanup**

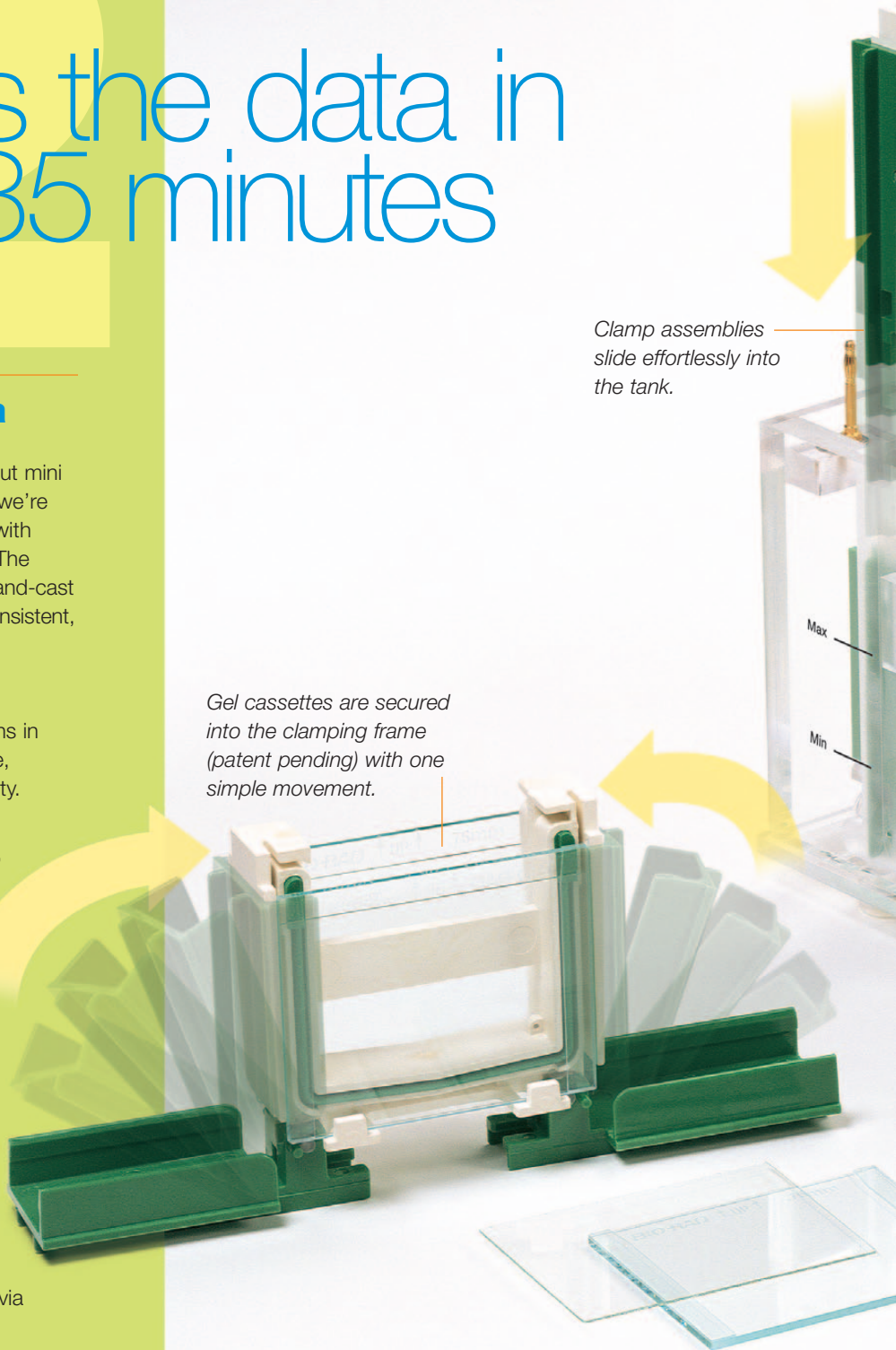
The unique clamping frame allows one-step core assembly. One lid for 12 gels reduces assembly and power supply programming time by 83%. A drain line attaches to the drain port via a quick-connect fitting for easy buffer drainage.

### **Space Saving**

The Mini-PROTEAN 3 Dodeca cell's minimal footprint saves valuable bench space.

Clamp assemblies slide effortlessly into the tank.

Gel cassettes are secured into the clamping frame (patent pending) with one simple movement.

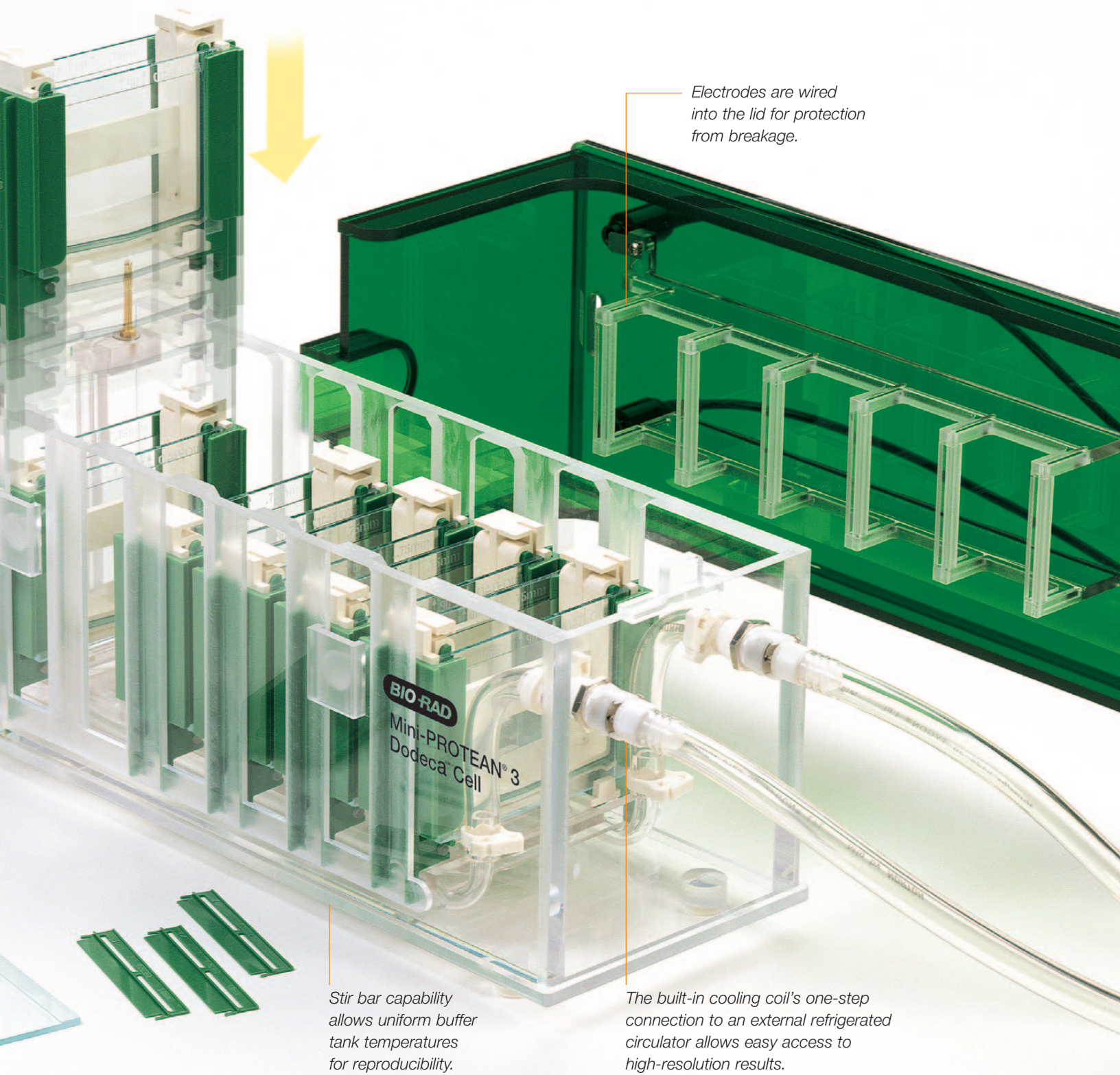


## Precast or Hand Cast? The Choice Is Yours...



### **Precast Gels**

The Dodeca cell is designed to run Ready Gel precast gels. Precast gels offer the convenience and reproducibility demanded by high-throughput labs. For more information, refer to the Bio-Rad Life Science catalog or web site.



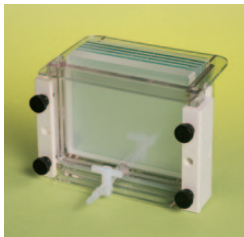
*Electrodes are wired into the lid for protection from breakage.*

*Stir bar capability allows uniform buffer tank temperatures for reproducibility.*

*The built-in cooling coil's one-step connection to an external refrigerated circulator allows easy access to high-resolution results.*

### **Multi-Casting Chamber**

With the new Mini-PROTEAN 3 multi-casting chamber, you can cast up to 12 gels of 0.5, 0.75, 1.0, or 1.5 mm thickness simultaneously. Acrylic blocks act as space fillers when fewer than 12 gels are cast. Gradient gels are cast through a bottom filling port to ensure reproducibility.



### **Model 485 Gradient Former**

The Model 485 gradient former can pour linear, concave, or convex exponential PAGE gradients.



## Dodeca Cell Specifications

Number of gels:	1 to 12
Precast gels:	Ready Gel precast gels
Hand-cast gels:	Cast using Mini-PROTEAN 3 spacer plates and Mini-PROTEAN 3 multi-casting chamber
Gel size:	7.3 x 8.3 cm (L x W)
Gel thickness:	0.5, 0.75, 1.0, or 1.5 mm
Typical running conditions:	200 V constant, 600 mA, 120 W maximum
Recommended power supply:	PowerPac 200
Cooling:	Built-in cooling coil attaches easily to external refrigerated circulator
Total buffer volume required:	3.4 to 4.4 L
Dimensions:	41.4 x 15.0 x 16.2 cm (L x H x W)
Weight:	5 kg/11 lbs

## Ordering Information

Catalog # Description

### MINI-PROTEAN 3 DODECA CELL

165-4100	Mini-PROTEAN 3 Dodeca Cell, includes tank with built-in cooling coil, lid with power cables, 6 clamp assemblies, 2 buffer dams, drain line, 2 gel releasors
165-4102	Replacement Clamp Assembly, 1
165-4103	Lower Electrode Assembly with Platinum Wire
165-4104	Replacement Drain Line
165-4105	Replacement Cooling Coil, includes connector tubing
165-2948	Replacement Power Cables

### MINI-PROTEAN 3 MULTI-CASTING CHAMBER

165-4110	Mini-PROTEAN 3 Multi-Casting Chamber, includes 8 acrylic blocks, 15 separation sheets, tapered luer fitting, stopcock valve (spacer plates and combs not included)
165-3308	Short Plates, 5
165-3309	Spacer Plates with 0.5 mm Integrated Spacers, 5
165-3310	Spacer Plates with 0.75 mm Integrated Spacers, 5
165-3311	Spacer Plates with 1.0 mm Integrated Spacers, 5
165-3312	Spacer Plates with 1.5 mm Integrated Spacers, 5
165-3362	IPG Comb, 1.0 mm, 2*
165-3368	IPG Comb, 1.5 mm, 2*
165-3356	Prep/2-D Comb, 0.75 mm, 2*
165-3361	Prep/2-D Comb, 1.0 mm, 2*
165-3367	Prep/2-D Comb, 1.5 mm, 2*
165-4114	Acrylic Blocks, 6 mm thickness, 8
165-4115	Separation Sheets, 15

\* For multi-well comb configurations, refer to the Bio-Rad Life Science catalog or web site.

### MODEL 485 GRADIENT FORMER

165-4120	Model 485 Gradient Former, 30-175 ml volume, includes body with valve stem and tubing connection kit
165-2006	Exponential Piston, for Model 385/485 (required to pour concave or convex exponential PAGE gradients)
165-2008	Replacement Tubing Connection Kit, includes stopcock, tapered luer coupling, tubing (1/8" ID, 3 ft), and Y-connector

Premixed buffers standardize the electrophoresis run and save preparation time. Available as liquid concentrates, in 1 L bottles, or 5 L cubes. For ordering information, refer to the Bio-Rad Life Science catalog or web site at [discover.bio-rad.com](http://discover.bio-rad.com).



**BIO-RAD**

Bio-Rad  
Laboratories

Life Science  
Group

Web Site [www.bio-rad.com](http://www.bio-rad.com) U.S. (800) 4BIORAD Australia 02 9914 2800 Austria (01)-877 89 01 Belgium 09-385 55 11 Canada (905) 712-2771  
China 86-10-62051850/51 Denmark 45 39 17 99 47 Finland 358 (0)9 804 2200 France 01 43 90 46 90 Germany 089 318 84-0  
Hong Kong 852-2789-3300 India (01-11) 461-0103 Israel 03 951 4127 Italy 39-02-216091 Japan 03-5811-6270 Korea 82-2-3473-4460  
Latin America 305-894-5950 Mexico 514-2210 The Netherlands 0318-540666 New Zealand 64-9-4152280 Norway 22-74-18-70 Russia 7 095 979 9  
Singapore 65-2729877 Spain 34-91-661-7085 Sweden 46 (0)8-55 51 27 00 Switzerland 01-809 55 55 United Kingdom 0800-181134