

Upgrading Bio-Plex Manager™ 3.0 or 4.0 Software to Bio-Plex Manager™ 6.1 Software

For technical support, call your local Bio-Rad office, or in the US, call 1-800-424-6723.

The Bio-Rad logo consists of the words "BIO-RAD" in a bold, white, sans-serif font. The text is centered within a black, rounded rectangular background that has a slight 3D effect with a shadow on the right side.

BIO-RAD

**Bio-Rad Laboratories, Inc., 2000 Alfred Nobel Drive, Hercules, CA
94547**

Copyright ©2011 Bio-Rad Laboratories, Inc. Reproduction in any form, either print or electronic, is prohibited without written permission of Bio-Rad Laboratories, Inc.

P/N 10022821 Rev B

1 Introduction

These instructions are part of an upgrade kit for computers currently running Bio-Plex Manager™ 3.0 or 4.0, that enables the use of Bio-Plex Manager 6.1 software. Details are also provided to verify the firmware required for the array reader (also called LX100 or LX200), the microplate platform (also called XY platform), and the HTF sheath delivery system (also called SD).

These are the main steps necessary for the upgrade, described later:

1. Ensure that your system meets the minimum requirements to run Bio-Plex Manager 6.1.
2. Uninstall Bio-Plex Manager 3.0 or 4.0.
3. Install Bio-Plex Manager 6.1 software from the CD.
4. Verify the firmware levels on the array reader, the microplate platform, and the HTF (if used).
5. Ensure your system's pressure settings are within range, and adjust them, if required.

Bio-Rad recommends uninstalling the previous version. Version 3.0 or 4.0 will no longer work after Bio-Plex Manager 6.1 is installed.

NOTE: Two cables are included with each kit: a USB communication cable (catalog #171-002003) for connecting the array reader and the computer, and a second cable (catalog #171-002002) for connecting the array reader and the HTF (if an HTF is used).

NOTE: Do not install these cables until these instructions tell you to do so.

The following items are provided with each upgrade kit.

Catalog #	Description
171-SUPG30	Bio-Plex Manager 6.1 standard software to upgrade Bio-Plex Manager 3.0 software; includes an Instrument Control license, Validation Kit 4.0, MCV plate IV, Bio-Plex reservoir, Calibration Kit and two communication cables (catalog #171-002003 and 171-002002)
171-SUPG40	Bio-Plex Manager 6.1 standard software to upgrade Bio-Plex Manager 4.0 software; includes an Instrument Control license, Validation Kit 4.0, MCV plate IV, Bio-Plex reservoir, Calibration Kit and two communication cables (catalog #171-002003 and 171-002002)

Use only the accompanying Bio-Plex components (Validation Kit 4.0, MCV plate IV, Bio-Plex reservoir, and Calibration Kit) with your Bio-Plex® system.

For information about available upgrade kits, refer to the Bio-Plex Manager 6.1 Software Upgrade and Configuration Guide, 10022817.

New features of Bio-Plex Manager 6.1 include multi-assay protocols, the capability to define standard lots, and an automatic standard curve optimizer. For information about using Bio-Plex Manager 6.1, refer to the Bio-Plex Manager 6.1 Software User Manual.

If any problems are encountered, contact your local Bio-Rad office, or in the US, call 1-800-4BIORAD (1-800-424-6723).

2 Software Upgrade

Bio-Plex® LX200 suspension array system components (and LX100 system components manufactured after January 1, 2002) meet the minimum requirements to run Bio-Plex Manager™ 6.1 software. For systems manufactured prior to that date, refer to the Bio-Plex Manager 6.1 Software Upgrade and Configuration Guide (part #10022817) for more information.

Uninstall Bio-Plex Manager 3.0 or 4.0

1. Ensure that the array reader, microplate platform and HTF are powered off.
2. Select Start | Control Panel.
3. Select Add or Remove (or Add/Remove) to populate a list of currently installed programs.
4. Select Bio-Plex Manager from the list.

5. Select Remove and answer Yes to the question “Are you sure you want to remove Bio-Plex Manager 3.0 (or 4.0) from your computer?” If the InstallShield Wizard window is displayed, select the radio button for Remove, and click Next. It should take less than a minute to uninstall.
6. If the Shared File Detected window opens, select the box to not display the message again, and click Yes.
7. Select Finish when you see “Maintenance Complete” and exit to the desktop.
8. Remove the software license key (HASP key).

Install Bio-Plex Manager 6.1 Software

1. Insert the Bio-Plex Manager 6.1 software disk into the CD drive. The installation will start automatically.
2. Select Install Bio-Plex Manager. The Wise Installation Wizard will start and the Windows Installer will open.
3. When the Welcome to the Bio-Plex Manager 6.1 Installation Wizard window appears, click Next.
4. Enter name and organization, if desired, and select Next.
5. To accept the default Destination Folder (recommended), select Next.
6. To accept the default Database Destination Folder (recommended), select Next. The data you saved with the older version will be transferred to the new database.
7. When queried for the installation type, select Typical, then Next.
8. When you are notified that the installer is Ready to Install the Application, select Next to begin installation.

CAUTION: Under some conditions, a Bio-Plex Manager window may open, noting that the database installation directory already contains a database file. If you are offered a choice to replace your current database, select “No, do not replace the existing file”. Replacing your database would cause you to lose previously-saved data.

9. When prompted that Bio-Plex Manager 6.1 has been successfully installed, select Finish. The software installation is complete.
10. Insert the new software license key (HASP key) provided with this kit into a USB port in your computer.

3 Verify Firmware Versions

There are two new cables in this upgrade kit: a USB cable for the connection between the array reader and the PC, and a second cable for a new connection between the array reader and the HTF.

NOTE: Do not install the new cables until these instructions tell you to do so.

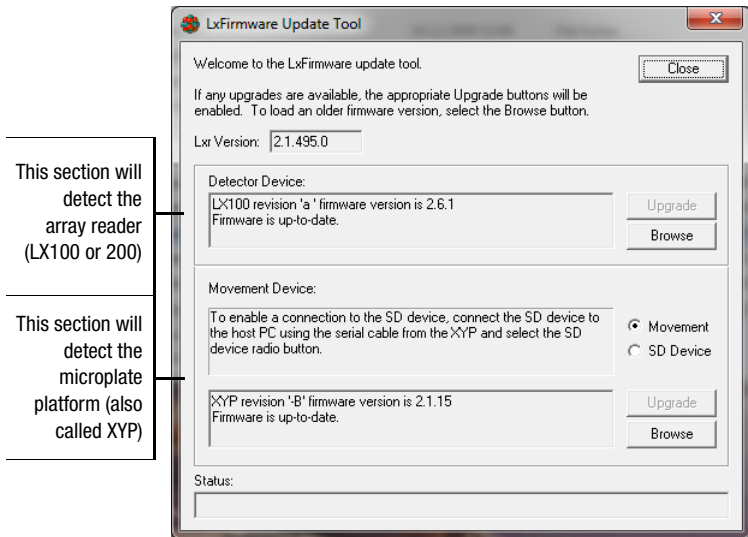
Prior to using the newly-installed Bio-Plex Manager™ 6.1 software, verify that the firmware level of each of the components is current, as described in the following steps.

Verify Array Reader Firmware

1. Power on the array reader and microplate platform. The HTF (if your system uses one) should remain powered off.

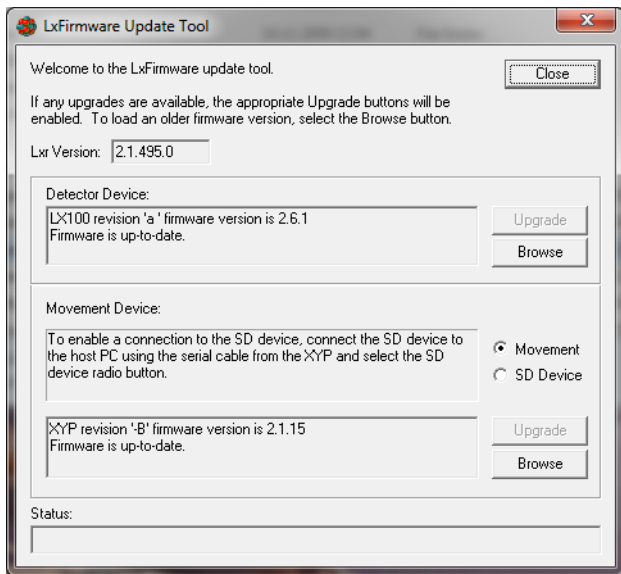
2. Select Start | All Programs | Luminex | LXR | LX Firmware.

The LxFirmware Update Tool screen opens as shown.



The Detector Device box detects the array reader, and the Movement Device box detects the microplate platform. The Movement Device of the HTF is detected later in the process.

It may take up to 3 minutes for both devices to be detected. The screen will appear as shown (some variations of the firmware versions may be observed).



NOTE: If the LxFirmware Update Tool does not detect both devices after 3 minutes, turn the devices off and on. If the devices are still not detected, confirm that the cables are firmly connected, reboot the computer, and repeat step 2. If the devices are still not detected, contact Bio-Rad Technical Support.

- Record the current firmware versions for the Detector Device _____, and the Movement Device _____, in the event that there are problems with the upgrade.

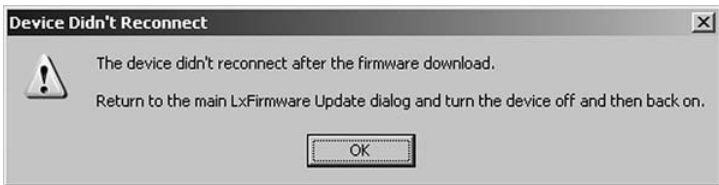
The correct firmware version for the Detector Device is 2.6.1, and the correct firmware version for the Movement Device is 2.1.15.

4. If the message in the Detector Device box states that the LX100 (or LX200) firmware version is 2.6.1, skip to Verify Microplate Platform Firmware on the next page. However, if the LX100 or LX200 firmware version is not 2.6.1, click the Upgrade button, and then Yes, to download version 2.6.1 firmware to the array reader.

It may take a few minutes to download the firmware and initialize the instrument.

5. Select OK when the download is complete. The Detector Device box should now indicate that the LX100 (or LX200) firmware version is 2.6.1.

NOTE: The following message may appear if the array reader is not able to reconnect once the firmware has been downloaded. Follow the instructions in the dialog box to reconnect the array reader.



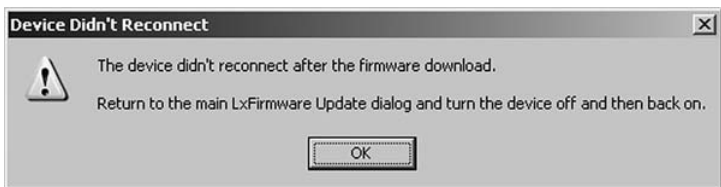
Verify Microplate Platform Firmware

1. If the message in the Movement Device box states that the XYP firmware version is 2.1.15, skip to step 3. However, if the firmware version is not 2.1.15, click the Upgrade button, and then Yes, to download version 2.1.15 firmware to the microplate platform.

It may take a few minutes to download the firmware and initialize the instrument.

2. Select OK when the download is complete. The Movement Device box should now indicate that the microplate platform (XYP) firmware version is 2.1.15.

NOTE: The following message may appear if the microplate platform is not able to reconnect once the firmware has been downloaded. Follow the instructions in the dialog box to reconnect the microplate platform.



3. Close the LxFirmware Update Tool. Power off the array reader and microplate platform prior to proceeding.
4. The new cables are now ready to be installed. The serial cable currently connected between the XY Platform and computer will remain. Replace the serial cable connecting the array reader and the computer with the new USB cable (catalog #171-002003). Connect the USB end to the computer and the serial end to the reader. See the diagram, Cable connections after firmware upgrade on page 15.

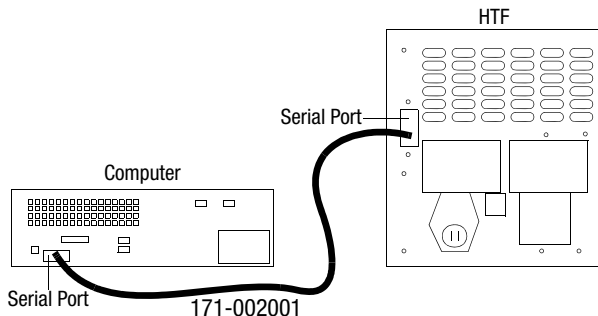
5. Power on the array reader and microplate platform. Restart the LxFirmware Update Tool by going to Start | All Programs | Lumindex | LXR | LX Firmware.
6. Confirm that the firmware versions are current; 2.6.1 for the Detector Device and 2.1.15 for the Movement Device.

NOTE: If the LxFirmware Update Tool does not detect both devices after 3 minutes, turn the devices off and on. If the devices are still not detected, confirm that the cables are firmly connected to each device, reboot the computer, and repeat step 2. If the devices are still not detected, contact Bio-Rad Technical Support.

Verify HTF Firmware

If the system does not include an HTF, the firmware verification is complete (skip to Pressure Setting on page 17). If the system includes an HTF, follow these instructions.

1. Disconnect the serial cable from the back of the microplate platform and connect it to the HTF. The serial cable (#171-002001) now connects the HTF to the computer as shown.

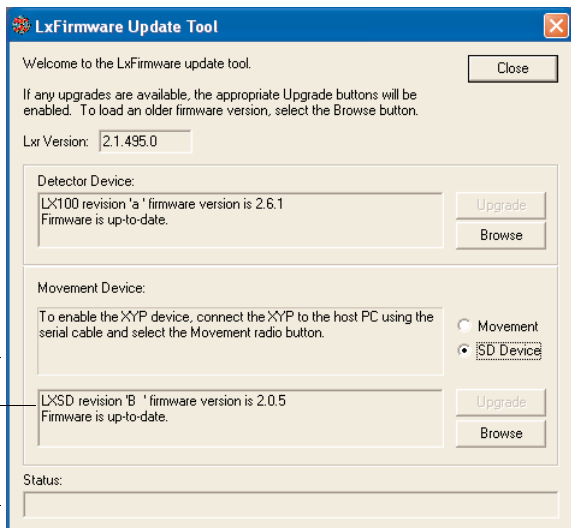


This cabling allows the HTF firmware to be upgraded.

2. Turn on the HTF.

- In the LxFirmware Update Tool screen, select the LXSD Device option next to the Movement Device box. It will take a few minutes for the device to be detected, then the screen will appear as follows (some variations of the firmware versions may be observed).

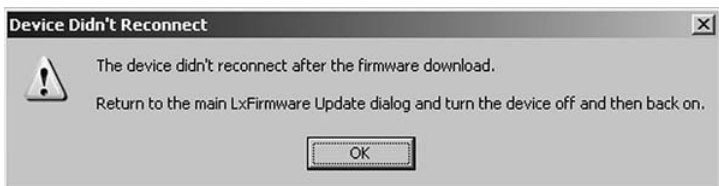
This section now detects the HTF sheath delivery system (also called the SD)



- Record the firmware version for the SD Device _____, in the event there is a problem with the upgrade. The correct firmware version for the LXSD Movement Device is 2.0.5.
- If the message in the Movement Device box states that the SD Device firmware version is already 2.0.5, skip to step 6. However, if the SD firmware version is not current, select Upgrade, and then Yes, to download version 2.0.5 firmware to the HTF. Select OK when the download is complete.

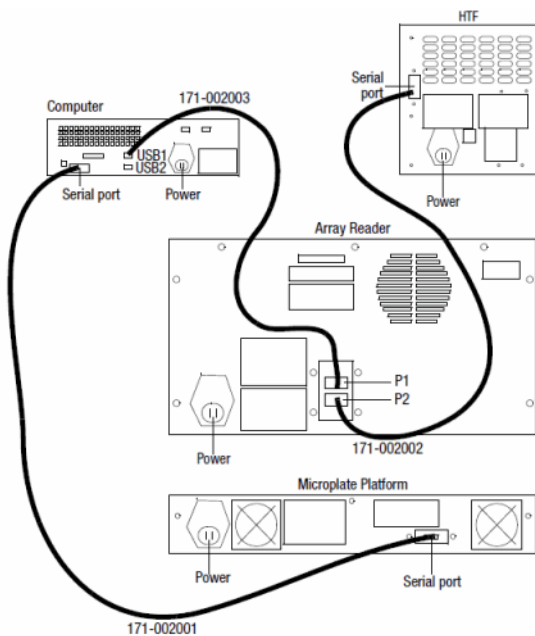
The Movement Device box should now indicate that the SD firmware version is 2.0.5.

NOTE: The following message may appear if the HTF is not able to reconnect once the firmware has been downloaded. Follow the instructions in the dialog box to reconnect the HTF.



6. Close the LxFirmware Update Tool. Power off the HTF prior to proceeding.
7. Power on the HTF. Restart the LxFirmware Update Tool by selecting Start | All Programs | Luminex | LXR | LX Firmware. Select the SD Device option next to the Movement Device box.
8. Confirm that the current firmware version is 2.0.5 for the LXSD Movement Device.
9. Close the LxFirmware Update Tool, disconnect the serial cable from the HTF, and reconnect it to the microplate platform.
10. Connect the array reader and the HTF as shown in the cable connection diagram on the next page). The firmware verification is complete.

NOTE: Do not connect new cables before upgrading firmware.



Cable connections after firmware upgrade

4 Pressure Setting

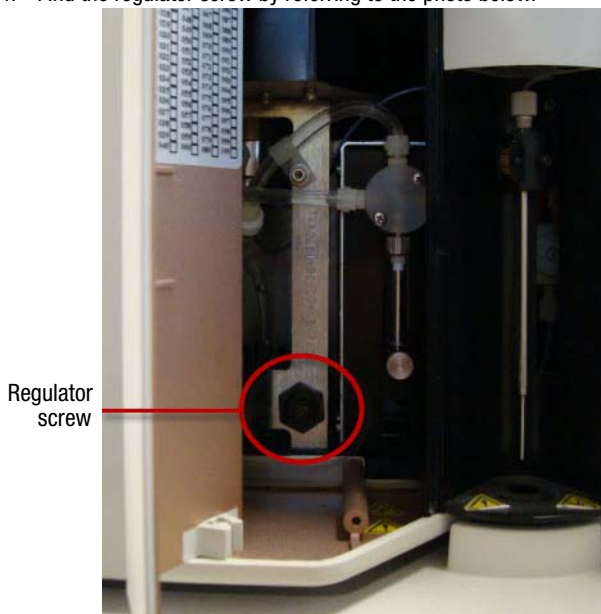
The following steps ensure that your sheath pressure setting is adjusted to the optimal setting. This is necessary in order for your system to operate properly.

1. Launch Bio-Plex Manager™ 6.1 software. From the menu bar, select Instrument | Additional Functions | Prime. Select OK to begin priming the array reader and HTF.
2. Once priming begins, select Instrument and open the Instrument Information window. Monitor the sheath pressure value and record the sheath pressure here _____ once it has stabilized. It may be necessary to repeat the prime function a few times.

NOTE: If priming does not begin because the system is continually in Pressurizing status, it will be necessary to adjust the regulator screw, as described in these steps.

3. Open the door on the front of the array reader, just to the left of the sample probe.

4. Find the regulator screw by referring to the photo below.



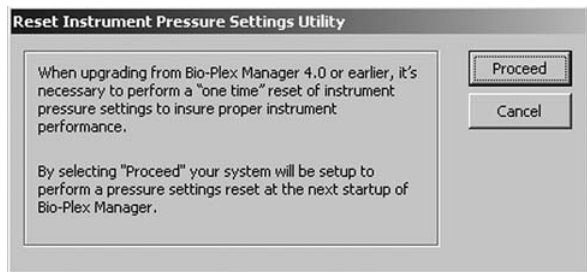
This screw needs to be turned fully clockwise, but you must first determine if it is turned fully clockwise already.

5. To do so, turn the screw one full turn in the counterclockwise direction, to develop a feel for the amount of force required to turn the screw. Now turn it clockwise, until you feel additional resistance (this may require many full turns of the screw). Do not force it beyond initial resistance.
6. When resistance is felt, stop turning clockwise and turn the screw one half turn back in the counterclockwise direction.
7. Close the front door, run another prime, and note if the sheath pressure is elevated above what was noted in step 2.

8. If the sheath pressure is elevated, find the regulator screw on the front of the HTF. It is labeled Regulator, and is located immediately below the Prime button. Again while priming, and with the pressure stable, adjust the pressure with this screw until it is the same as noted in step 2. Turning the screw counterclockwise lowers the pressure. Continue running prime until the pressure is set correctly.
9. Run Prime once more to verify the pressure is set correctly by observing that it stabilizes at the correct pressure (+0.2 psi). If necessary, adjust further using the regulator screw.

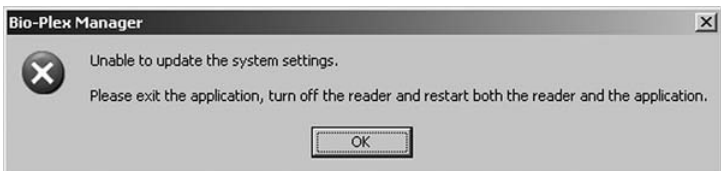
Reset Instrument Pressure Settings

1. Close the Bio-Plex Manager 6.1 software application. Select Start | All Programs | Bio-Plex Manager 6.1 | Utilities.
2. Select Reset Instrument Pressure Settings. The following dialog box will appear.

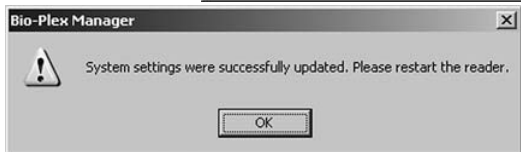
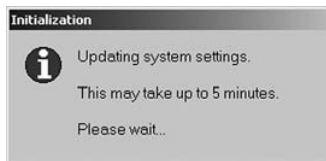


3. Select Proceed. Select OK once the Setup Completed Successfully message appears.
4. Power off the array reader, then power it back on.

5. Launch the Bio-Plex Manager 6.1 software application. If the system is already warmed up, the following dialog box appears.



6. Exit the application and power off the array reader.
7. Power on the array reader and restart the Bio-Plex Manager 6.1 software application. The following two dialog boxes will appear in succession.



8. To restart the array reader, first exit from Bio-Plex Manager. Cycle the power on the array reader and relaunch Bio-Plex Manager. Congratulations — the Bio-Plex Manager 6.1 software installation is complete!

NOTE: If problems are encountered, first follow the instructions on any error message that appears. If you continue to have concerns, contact your local Bio-Rad technical office, or in the US, call Technical Support at 1-800-4BIORAD (1-800-424-6723).



BIO-RAD

**Bio-Rad
Laboratories, Inc.**

*Life Science
Group*

Web site www.bio-rad.com **USA** 800 424 6723
Australia 61 2 9914 2800 **Austria** 01 877 89 01 **Belgium** 09 385 55 11
Brazil 55 31 3689 6600 **Canada** 905 364 3435 **China** 86 21 6169 8500
Czech Republic 420 241 430 532 **Denmark** 44 52 10 00
Finland 09 804 22 00 **France** 01 47 95 69 65 **Germany** 089 31 884 0
Greece 30 210 777 4396 **Hong Kong** 852 2789 3300
Hungary 36 1 459 6100 **India** 91 124 4029300 **Israel** 03 963 6050
Italy 39 02 216091 **Japan** 03 6361 7000 **Korea** 82 2 3473 4460
Malaysia 60 3 2117 5260 **Mexico** 52 555 488 7670
The Netherlands 0318 540666 **New Zealand** 64 9 415 2280
Norway 23 38 41 30 **Poland** 48 22 331 99 99 **Portugal** 351 21 472 7700
Russia 7 495 721 14 04 **Singapore** 65 6415 3170
South Africa 27 861 246 723 **Spain** 34 91 590 5200
Sweden 08 555 12700 **Switzerland** 061 717 95 55
Taiwan 886 2 2578 7189 **Thailand** 66 2 6518311
United Kingdom 020 8328 2000