

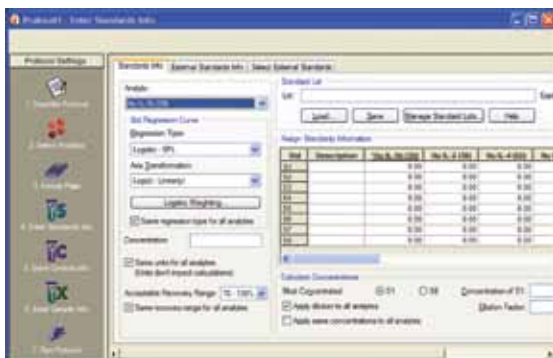
## Importing Bio-Plex Assay Standards in Your Bio-Plex Manager Protocol

This protocol will help you import the appropriate standard values into your Bio-Plex Manager protocol and save you from manually entering the data.

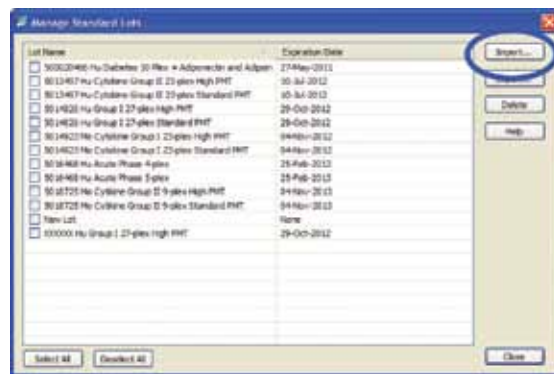
Before starting this procedure you need to download the standards database to your desktop by following this link: <http://www.bio-rad.com/bio-plexsoftware>.

This comprehensive database contains the standards values for all lots of Bio-Plex assay standards. Follow instructions below to import the standards lots values into your Bio-Plex Manager protocol.

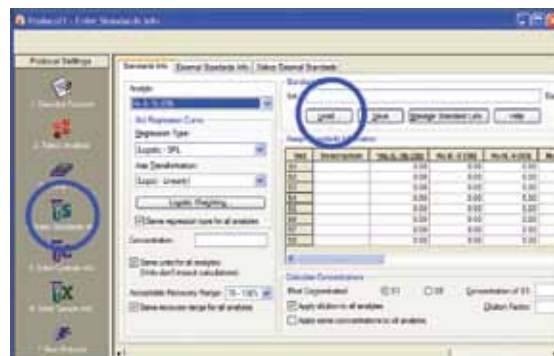
1. Open the protocol for your run in Bio-Plex Manager. Make sure analytes have been selected in **Select Analytes** and standards have been added in **Format Plate** before proceeding.
2. In the **Standard Info** tab of Bio-Plex Manager click on **Manage Standard Lots**.



3. Click on the **Import** button in the **Manage Standard Lots** dialog box.



4. Navigate to the database of interest and open it. Choose the lot(s) of interest to import into your personal database. The lot number is located on the standard vial or the insert within the bag in which the vials are shipped. The number is referred to as either a **lot number** or a **control number** and is usually a 7 digit number starting with a five followed by a zero (5013497).
5. You may now add the values to your protocol by loading the lot from your personal database using the **Load** button shown below.





**Bio-Rad  
Laboratories, Inc.**

Life Science  
Group

**Web site** [www.bio-rad.com](http://www.bio-rad.com) **USA** 800 424 6723 **Australia** 61 2 9914 2800 **Austria** 01 877 89 01 **Belgium** 09 385 55 11 **Brazil** 55 11 5044 5699  
**Canada** 905 364 3435 **China** 86 21 6169 8500 **Czech Republic** 420 241 430 532 **Denmark** 44 52 10 00 **Finland** 09 804 22 00  
**France** 01 47 95 69 65 **Germany** 089 31 884 0 **Greece** 30 210 9532 220 **Hong Kong** 852 2789 3300 **Hungary** 36 1 459 6100 **India** 91 124 4029300  
**Israel** 03 963 6050 **Italy** 39 02 216091 **Japan** 03 6361 7000 **Korea** 82 2 3473 4460 **Mexico** 52 555 488 7670 **The Netherlands** 0318 540666  
**New Zealand** 64 9 415 2280 **Norway** 23 38 41 30 **Poland** 48 22 331 99 99 **Portugal** 351 21 472 7700 **Russia** 7 495 721 14 04  
**Singapore** 65 6415 3188 **South Africa** 27 861 246 723 **Spain** 34 91 590 5200 **Sweden** 08 555 12700 **Switzerland** 061 717 95 55  
**Taiwan** 886 2 2578 7189 **Thailand** 800 88 22 88 **United Kingdom** 020 8328 2000